




JAPANESE
 TECHNOLOGY
 "LONG BEARING LIFE"



TUV
 CERTIFIED



CE MARK
 CERTIFIED



CLASS 0
 AIR QUALITY



**100%
 OIL-FREE**



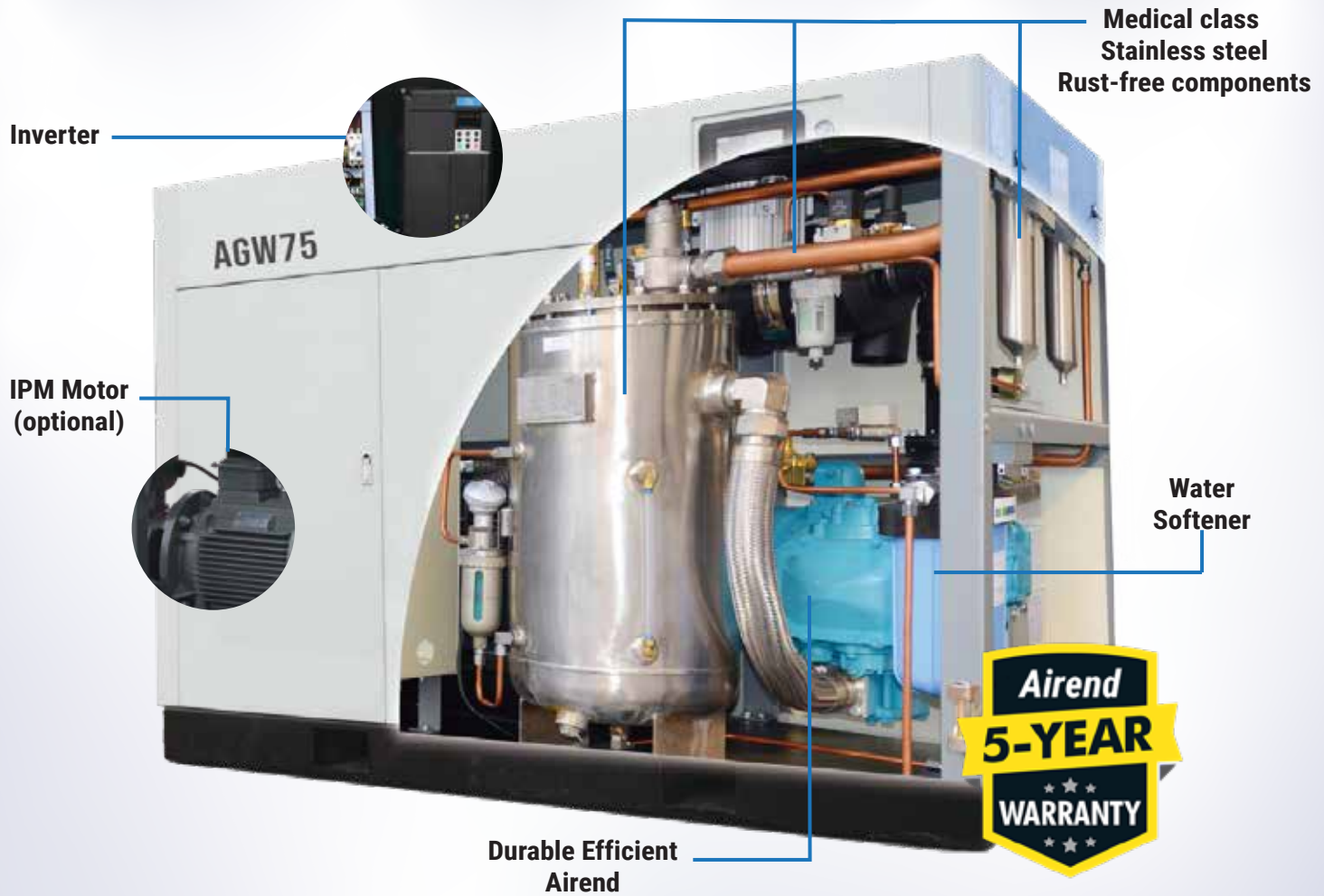
Up to
 40%
 energy
 saving



Water Injected Screw Compressor with permanent magnet motor + VFD

Exclusively Distributed by:





Specifications:

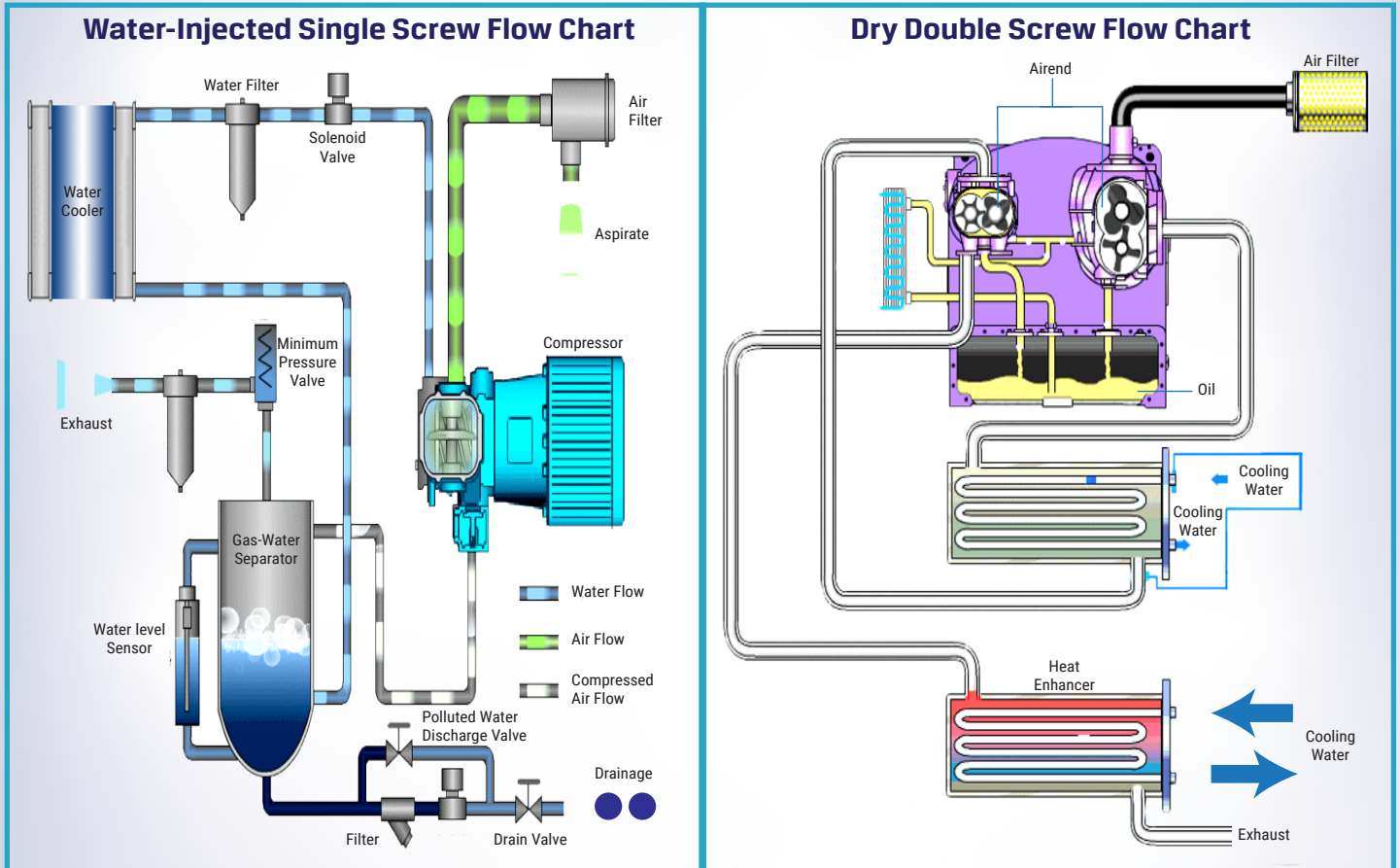
Model	Pressure Range (Mpa)	Capacity Range (m3/min)	Motor Power (kW)	Noise dB (A)	Connection (inch)	Weight (kg)	Dimension L x W x H (mm)
AGW08	0.7~1.0	0.3 ~ 1.3	7.5	57	3/4	430	1100 x 750 x 1350
AGW15	0.7~1.25	0.6 ~ 2.5	15	57	1	570	1400 x 820 x 1500
AGW22	0.7~1.25	0.8 ~ 3.2	22	60	1	640	1400 x 820 x 1500
AGW37	0.7~1.25	1.8 ~ 6.2	37	61	1-1/2	1010	1690 x 1000 x 1600
AGW45	0.7~1.25	2.1 ~ 7.6	45	65	1-1/2	1110	2050 x 1200 x 1500
AGW55	0.7~1.25	2.6 ~ 10.0	55	67	2	1200	2050 x 1200 x 1500
AGW75	0.7~1.25	3.5 ~ 13.0	75	71	2	1550	2150 x 1250 x 1500
AGW90	0.7~1.25	4.0 ~ 16.8	90	72	2-1/2	2250	2450 x 1450 x 1700
AGW110	0.7~1.25	5.0 ~ 20.0	110	74	3	2450	2450 x 1450 x 1700
AGW132	0.7~1.25	6.5 ~ 25.0	132	77	3	2450	2450 x 1450 x 1700
AGW160	0.7~1.25	7.6 ~ 27.0	160	78	3	2600	3100 x 1700 x 2100
AGW185	0.7~1.25	9.0 ~ 33.8	180	78	3	3000	3100 x 1700 x 2100
AGW250	0.7~1.25	12.0 ~ 43.0	250	79	4	4500	3100 x 1700 x 2100

**Options: Induction Motor / IPM Motor · Air Cooled / Water Cooled · 220V / 350V / 440V

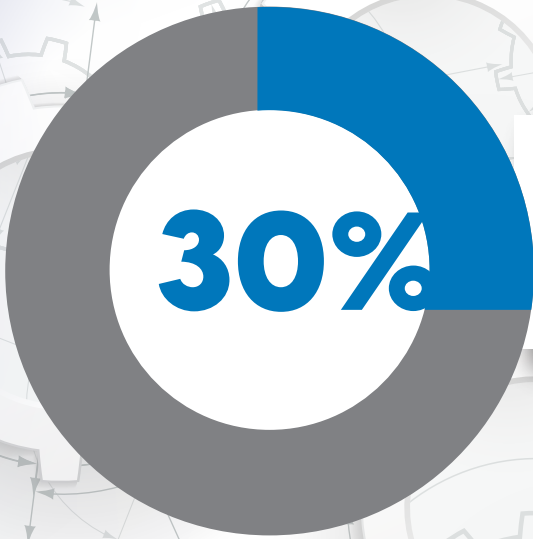
Features:

- ✔ 20 ~ 50% Energy Saving
- ✔ Permanent magnet motor with IE4 class efficiency
- ✔ Intelligent controller for monitoring, maintenance, faulty, and other info
- ✔ Low noise operation; low discharge temperature
- ✔ 5 ~ 15% more air than dry screw compressor
- ✔ Premium Airend design with 5 year warranty
- ✔ Longer service life for bearings
- ✔ Low maintenance cost (clean water technology)

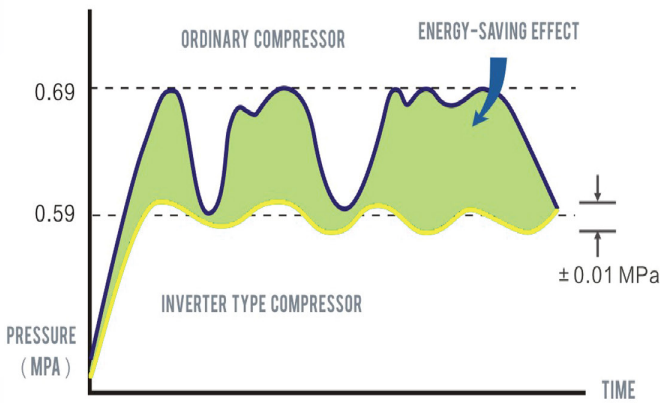
Technology Comparison



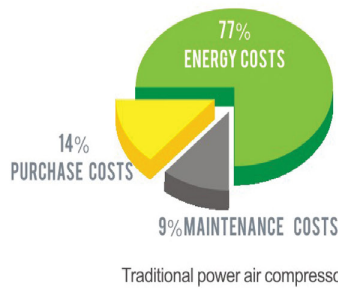
Features	Water-Injected Single Screw	Dry Double Screw
Air Delivery	5 ~ 15% more Air due to better Isothermal Compression	Energy Loss due to High Temperature
Air Purity	Purified by water; Clean Air after separation	Directly compressed then discharged; Containing Dust and Oil residue
Noise Level	60 ~ 65 db(A)	64 ~ 78 db(A)
Discharge Temperature	50°C	180°C to 200°C
Durability	30,000 – 50,000 Hours No Losses in Efficiency for over 5 years since this is Water Sealed Compression	18,000 Hours 10 – 15% Losses in 3 years due to high temperature with Air Gap Compression that leads to coating deterioration
Maintenance Cost (Duration: 5 years)	Low Primarily Air & Water Filter cost	High Many Parts & Airend replacement cost
Air Treatment Cost	Low Smaller Dryer Sizing due to lower temperature discharge	High Larger Dryer is required
Airend Warranty	5 Years	1 Years



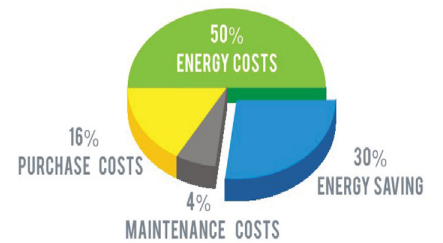
RETURN ON INVESTMENT
In less than a year (Inverter Cost)



5-YEAR CAPITAL STRUCTURE COMPARISON FOR COMPRESSOR USING



Traditional power air compressor



Inverter compressor
(energy consumption decreased by 30%)

NOTE: Based on 12Hours/Day, 300Days/Year

Other Products

- Industrial Blowers
- Hoists and Winches
- Piston Compressors
- Refrigerated Air Dryers
- Nitrogen & Oxygen Generators

- Air Filters
- Auto Drains
- Vacuum Pumps
- Industrial Pumps
- Energy Saving Components

