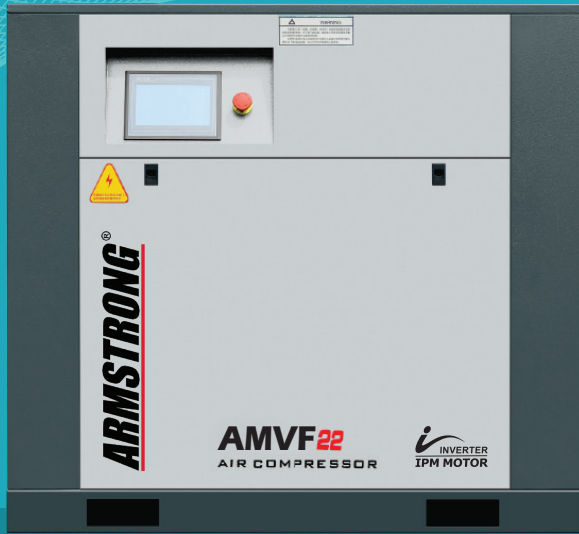




# AMVF

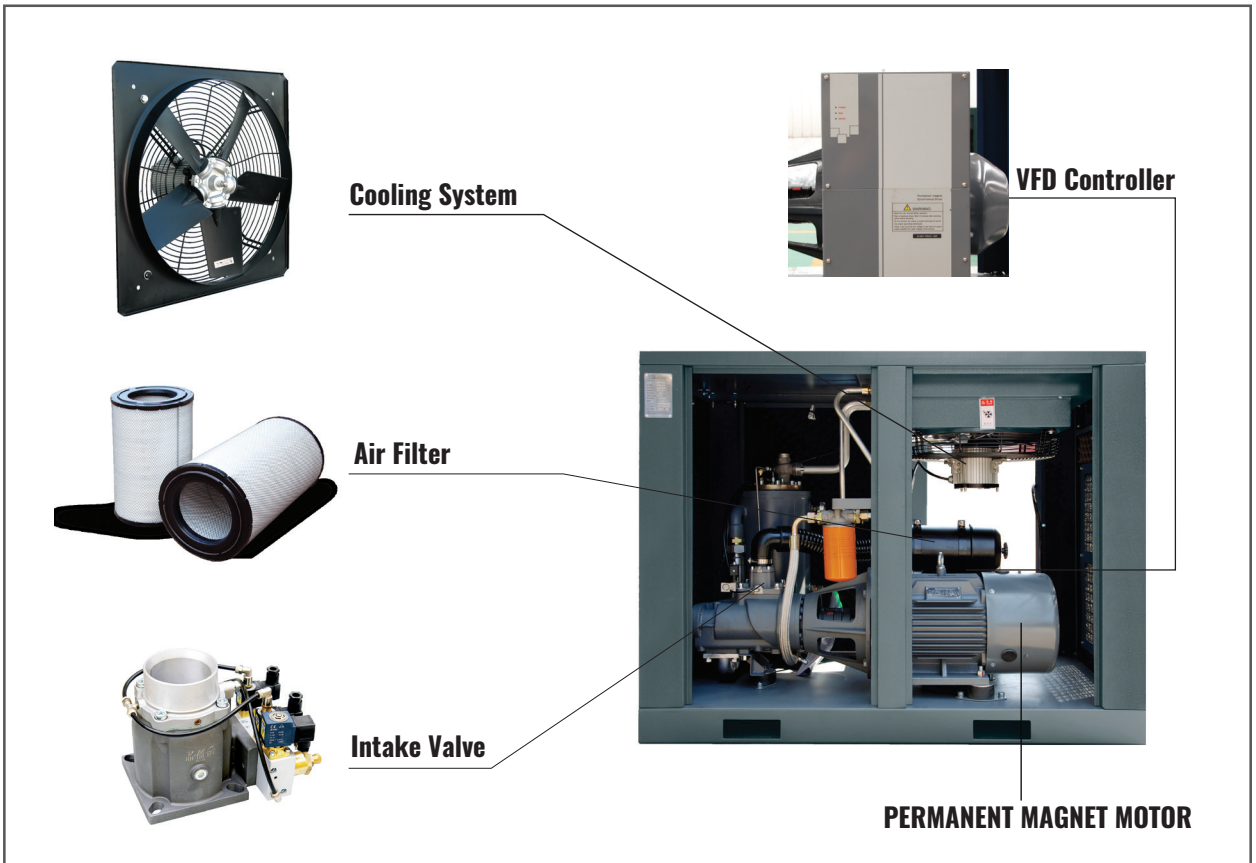
IPM Motor + Inverter Air Compressor  
7.5 ~ 132kW



COMBINING ENERGY-SAVING  
AND MOTOR EFFICIENCY

# AMVF Technical Specification of IPM motor + Inverter series

Model	Dis. Pressure Range MPa	Dis. Capacity Range m <sup>3</sup> /min	Power kW	Connect Dia.	Weight kg	Dimension(L*W*H) mm
AMVF 7.5	0.65 - 1.0	1.0 - 1.25	7.5	G3/4	170	880×510×800
AMVF 11	0.65 - 1.0	1.5 - 1.85	11	G1	220	1000×670×1090
AMVF 15	0.6 - 1.0	2.0 - 2.4	15	G1	250	1000×670×1090
AMVF 22	0.6 - 1.0	2.9 - 4.0	22	G1	330	1200×800×1120
AMVF 37	0.6 - 1.0	5.0 - 6.4	37	G1 ½	500	1340×850×1330
AMVF 45	0.6 - 1.0	6.4 - 8.3	45	G1 ½	660	1480×1030×1365
AMVF 55	0.6 - 1.0	8.1 - 9.9	55	G1 ½	710	1480×1030×1365
AMVF 75	0.6 - 1.0	10.0 - 13.2	75	G2	1170	1800×1190×1710
AMVF 90	0.6 - 1.0	12.0 - 16.0	90	G2	1180	1800×1190×1710
AMVF 110	0.6 - 0.8	23.0	110	DN65	1770	2700×1230×1730
AMVF 132	0.6 - 0.8	25.0	132	DN65	1860	2700×1230×1730

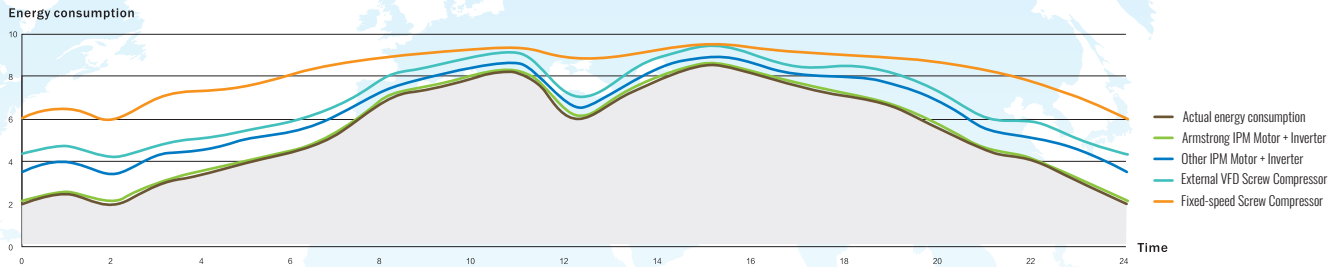


Armstrong Compressors reserves the right of conducting the alteration or/and modification to some products or/and their components & parts without prior notice.



# Energy efficiency comparison

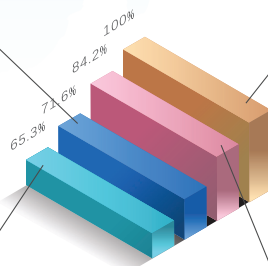
Take 37kW air compressor as example



## ARMSTRONG AMVF VS asynchronous frequency changer

Ordinary PM motor + Inverter  
71.6%kW x h (Annual consumption)

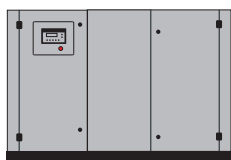
Ordinary fixed-speed air compressor  
as basic power consumption 100%



Armstrong IPM motor + Inverter compressor  
65.3%kW x h (Annual consumption)

Ordinary screw compressor with external inverter  
84.2%kW x h (Annual consumption)

## ARMSTRONG AMVF VS ordinary screw air compressor



37kW fixed-speed screw compressor



37kW Armstrong IPM Motor + Inverter

### Test results

